

Raw Magnets

Disk-Shaped, with Bore or Countersunk

SPECIFICATION

Materials of the magnet:

SmCo **SC**

Samarium, cobalt

Plain

Temperature resistant up to 350 °C

NdFeB **ND**

Neodymium, iron, boron

Nickel-plated

Temperature resistant up to 80 °C

Hard ferrite **HF**

Plain

Temperature resistant up to 250 °C



INFORMATION

Raw magnets GN 55.1 are disk-shaped unshielded magnets. They can be easily and securely fastened using the bore or countersunk. If no suitable retaining magnets or magnet systems are available, raw magnets may be used in combination with appropriate holding constructions to build up highly specific magnet systems.

When used without air gap, individual raw magnets always have lower magnetic forces than a magnet system in which shielding and magnetic return enormously intensify the force acting at the magnetic surface. Depending on the air gap between magnet and mating component, individual raw magnets, unlike magnet systems, can have substantially higher retaining forces.

- More Information on Retaining Magnets (see page 2022)

ON REQUEST

- Other dimensions **SC, HF**

- Zinc or nickel-plated finish **SC**

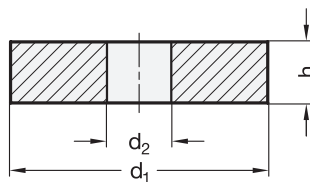
- Other dimensions and shape **ND**

- Temperature resistant up to 220 °C **ND**

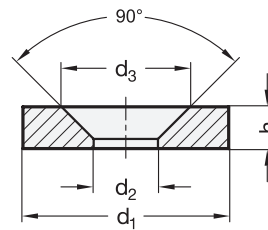
- With adhesive pad **ND**

- Zinc or gold-plated finish **ND**

with bore

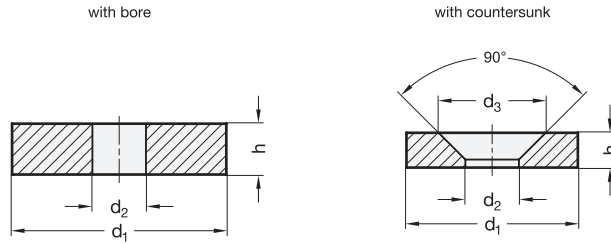


with countersunk



GN 55.1-SC

Description	$d_1 \pm 0.1$	$d_2 \pm 0.1$	$h \pm 0.1$	d_3	Nominal magnetic forces in N	
GN 55.1-SC-15-8-3,5	15	8	3,5	-	23	4
GN 55.1-SC-18-8-4	18	8	4	-	31	7
GN 55.1-SC-24-11-4	24	11	4	-	51	12
GN 55.1-SC-32-10,5-4	32	10,5	4	-	77	25
GN 55.1-SC-12-3,5-3	12	3,5	3	6.7 ± 0.4	15	2
GN 55.1-SC-15-4,5-3,5	15	4,5	3,5	$9.3 +1$	21	4
GN 55.1-SC-18-4,5-4	18	4,5	4	$9 +1$	30	8
GN 55.1-SC-24-5,5-4	24	5,5	4	11.5 ± 0.5	56	13
GN 55.1-SC-32-5,5-4	32	5,5	4	11.5 ± 0.5	72	25



GN 55.1-ND

Description	d ₁	d ₂	h ±0.1	d ₃ +0.5	Nominal magnetic forces in N	⚖️
GN 55.1-ND-6-2-3	6 ±0.1	2 ±0.1	3	-	4.5	1
GN 55.1-ND-8-4,5-3	8 ±0.1	4,5 ±0.1	3	-	5.5	2
GN 55.1-ND-10-4,5-3	10 ±0.1	4,5 ±0.1	3	-	12	3
GN 55.1-ND-12-4,5-3	12 ±0.1	4,5 ±0.1	3	-	18	4
GN 55.1-ND-15-6-3,5	15 ±0.1	6 ±0.1	3,5	-	25	5
GN 55.1-ND-19,8-4,2-10	19,8 ±0.1	4,2 ±0.1	10	-	88	22
GN 55.1-ND-20,8-14,8-6	20,8 ±0.1	14,8 ±0.1	6	-	55	7
GN 55.1-ND-22-16,5-6	22 ±0.1	16,5 ±0.1	6	-	49	8
GN 55.1-ND-24-9,5-4	24 ±0.1	9,5 ±0.1	4	-	68	11
GN 55.1-ND-32-10,5-2	32 ±0.2	10,5 ±0.2	2	-	42	12
GN 55.1-ND-35-19-4,5	35 ±0.1	19 ±0.2	4,5	-	110	23
GN 55.1-ND-38-12-4	38 ±0.1	12 ±0.1	4	-	110	45
GN 55.1-ND-40-12,5-4	40 ±0.1	12,5 ±0.1	4	-	126	35
GN 55.1-ND-48-15-5	48 ±0.2	15 ±0.15	5	-	165	83
GN 55.1-ND-56-15-6	56 ±0.2	15 ±0.1	6	-	230	137
GN 55.1-ND-8-2,6-3	8 ±0.1	2,6 ±0.1	3	5,2	7	1
GN 55.1-ND-10-3,5-3	10 ±0.1	3,5 ±0.1	3	6,6	11	1
GN 55.1-ND-12-3,5-3	12 ±0.1	3,5 ±0.1	3	6,6	18	3
GN 55.1-ND-15-4,5-3,5	15 ±0.1	4,5 ±0.1	3,5	9,3	29	4
GN 55.1-ND-17-4,5-5	17 ±0.1	4,5 ±0.1	5	9,3	50	8
GN 55.1-ND-18-4,5-4	18 ±0.1	4,5 ±0.1	4	9,3	41	9
GN 55.1-ND-24-5,5-4	24 ±0.1	5,5 ±0.1	4	11,5	66	14
GN 55.1-ND-40-11,5-4	40 ±0.1	11,5 ±0,5	4	7,5	130	20

GN 55.1-HF

Description	d ₁	d ₂	h	d ₃	Nominal magnetic forces in N	⚖️
GN 55.1-HF-19,8-10-4,3	19,8 ±0,2	10 ±0,2	4,3 ±0,1	-	5	5
GN 55.1-HF-20-6,5-5	20 ±0,1	6,5 ±0,2	5 ±0,1	-	5,5	7
GN 55.1-HF-26-15-3,8	26 ±0,4	15 ±0,3	3,8 ±0,1	-	6,5	15
GN 55.1-HF-32-12,2-8	32 ±0,2	12,2 ±1	8 ±0,2	-	15,5	26
GN 55.1-HF-35,5-6,5-9,5	35,5 ±0,7	6,5 ±0,3	9,5 ±0,1	-	20	44
GN 55.1-HF-36-18-8	36 ±0,3	18 ±0,5	8 ±0,1	-	17	22
GN 55.1-HF-40-19-7,5	40 ±0,8	19 ±0,4	7,5 ±0,1	-	26	36
GN 55.1-HF-45-22-8,5	45 ±0,8	22 ±0,4	8,5 ±0,1	-	28	51
GN 55.1-HF-51-24-9	51 ±1,1	24 ±0,5	9 ±0,1	-	30	72
GN 55.1-HF-55-24-8	55 ±1,1	24 ±0,5	8 ±0,1	-	30	74
GN 55.1-HF-55-24-12	55 ±1,1	24 ±0,5	12 ±0,1	-	35	125
GN 55.1-HF-70-15-15	70 ±1,2	15 ±0,5	15 ±0,1	-	75	265
GN 55.1-HF-72-32-8	72 ±0,2	32 ±0,5	8 ±0,1	-	32	126
GN 55.1-HF-72-32-15	72 ±1,2	32 ±0,5	15 ±0,1	-	53	235
GN 55.1-HF-86-34-18	86 ±1,2	34 ±0,5	18 ±0,1	-	106	410
GN 55.1-HF-102-51-20	102 ±0,2	51 ±1	20 ±0,1	-	145	588
GN 55.1-HF-13,6-3,5-3,9	13,6 ±0,3	3,5 ±0,1	3,9 ±0,1	6,5 +1,5	2,5	7
GN 55.1-HF-17,2-4,1-5,3	17,2 ±0,3	4,1 ±0,4	5,3 ±0,1	9,5 +0,5	5	8
GN 55.1-HF-21,8-5,5-6	21,8 ±0,4	5,5 ±0,2	6 ±0,1	11,5 +1	8,5	10
GN 55.1-HF-28-5,5-6	28 ±0,5	5,5 ±0,3	6 ±0,1	11,5 +1	13	17
GN 55.1-HF-31-5,3-15	31 ±0,8	5,3 ±0,3	15 ±0,5	12,5 +1,8	24	53
GN 55.1-HF-35,5-5,5-6,5	35,5 ±0,8	5,5 ±0,2	6,5 ±0,1	12,5 +1	18	30



Magnets 18